

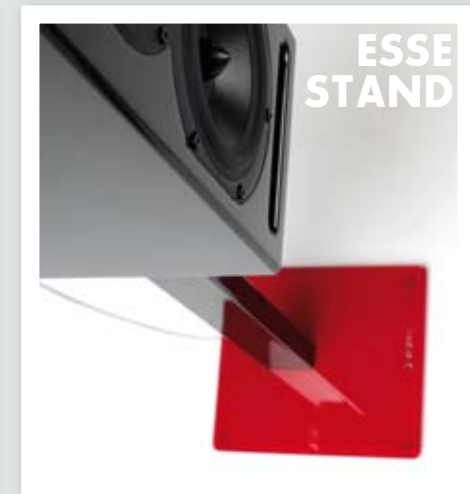


AUDIO/VIDEO FURNITURE, WALL MOUNTS & CABLES

www.norstone-design.com



the ESSEntial of design



AUDIO/VIDEO FURNITURE

5. LUNDE

6. DYVAD

7. SAEBY

8. LINY

9. CINEMA

10. CARLY
11. SÉ

12. ESSE RANGE

14. KUBBEN RANGE

16. PIÙ AV

17. NELIO

18. MASK AV
19. BEOS

20. WOODEN

21. EPUR RANGE

22. BERGEN RANGE

24. STYLUM & FINN

25. WALK STAND

WALL MOUNTS

26. - 27.

SLIM 2337

SLIM 3763

SLIM V200

PLACE 200
- MAGIC 3255

WALD 3763

PROJE-S

PROJE-L
- PROJE-W

IRYX

SAFELINE

AUDIO/VIDEO CABLES

28. PACKAGINGS

SPEAKER CABLES

29. CLASSIC & CLASSIC WHITE

30. FLAT WIDEBAND

31. DHCR 100.2

32. SILVER WIDEBAND
- AUDIO CONNECTORS

33. BANANA PLUGS

34. RCM 350 & RCS 500

35. IRCK 280 & IRK 280
- HDMI RANGE


36. HDR 150 & HDR 180

37. HDS 500 & HDS 540


38. HDMI ACCESSORIES

39. CABLE DISPLAY


NORSTONE SPECIFICATIONS




Bamboo is a fast growing tree with exceptional mechanical performance. By choosing bamboo for its furniture line, Norstone is fighting deforestation.



This exclusive system allows to operate electronics behind closed doors without any risk of overheating. Natural convection allows an air flow within the furniture.



This symbol indicates that the furniture has been specially made to house the center speaker of your home cinema system.



This logo indicates that Norstone HDMI cables are Full HD 3D 1080p compatible.

LUNDE

This black lacquer piece of AV furniture will house your system with style. Our exclusive cooling system will help your amplifier performing perfectly without any risk of overheating even when the door is shut. All the cables are hidden. Lunde will help you focusing on the movie, not on the equipment.

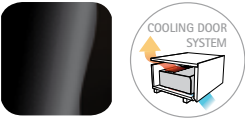


DIMENSIONS

Overall dimensions (W x H x D):
1338 x 386 x 476 mm / 53.7" x 15.2" x 18.7"
Upper shelf (W x D):
1338 x 472 mm / 53.7" x 18.6"
Internal shelf (W x H x D):
2 compartments of 641 x 150 x 438 mm / 25.2" x 5.9" x 17.2"

DESIGN

Finishes: Glossy black / Black
Structure: Glossy black powder coated steel
Shelves: Glossy black wood
Miscellaneous: Cooling door system, Cable hole on back



MAXIMUM LOAD

Upper shelf: 50 kg / 110.2 lbs
Internal shelf: 40 kg / 88.2 lbs

DYVAD

An elegant piece of AV furniture designed with a top shelf for flat screens up to 46 inches. The top shelf saves space by raising the height of your screen (no drilling in your walls required). This contemporary and beautiful piece of furniture will house your full AV equipment with style and will match any kind of home design.



DIMENSIONS

Overall dimensions (W x H x D):

1100 x 502 x 450 mm / 43.3" x 19.7" x 17.7"

Upper shelf (W x D):

550 x 300 mm / 21.6" x 11.8"

Intermediate shelf (W x H x D):

1040 x 174 x 400 mm / 41" x 6.9" x 15.7"

Internal shelf (W x H x D):

1040 x 192 x 400 mm / 41" x 7.5" x 15.7"

DESIGN

Finishes: Glossy black / Black

Structure: Glossy black powder coated steel

Shelves: Black tempered glass



MAXIMUM LOAD

Upper shelf: 60 kg / 132.3 lbs

Intermediate shelf: 20 kg / 44 lbs

Internal shelf: 20 kg / 44 lbs

SAEBY

The neatly designed Saeby is a wide and low piece of AV furniture that will match any home design. Its contemporary looks and style will suit any modern and beautiful flat screen. A mix of black and white lacquer sets off your AV equipment perfectly and your flat screen stars on top of this classic piece of furniture. The 60° swivel (30°+30°) allows everyone in the viewing room to enjoy the show wherever they are seated.



DIMENSIONS

Overall dimensions (W x H x D):

1500 x 1210 x 450 mm / 59" x 47.6" x 17.7"

Upper shelf (W x D):

1500 x 450 mm / 59" x 17.7"

Internal shelves (W x H x D):

2 compartments of 705 x 260 x 450 mm /

27.8" x 10.2" x 17.7"

DESIGN

Finishes: Glossy white / Glossy black

Structure: alveolar panel + steel tube

Shelves: alveolar panel

VESA: Up to 600 x 400

Orientation angle: 30° on each side



MAXIMUM LOAD

Screen mount: 60 kg / 132.2 lbs

Upper shelf: 40 kg / 88.2 lbs

Internal shelf: 40 kg / 88.2 lbs

LINY

Designed for small spaces, Liny has all the advantages of larger pieces of furniture: original design and high quality material. It can welcome a flat screen from 32 to 37" as well as the associated electronics (cable and satellite decoder, DVD/Blu-ray player, games console).



DIMENSIONS

Overall dimensions (W x H x D):
680 x 491 x 400 mm / 26.8" x 19.3" x 15.7"
Height between shelves: 195 mm / 7.7"

DESIGN

Finish: Glossy black / Clear
Structure: Glossy black powder coated steel
Shelves: Clear tempered glass
Miscellaneous: Self-gripping strap



MAXIMUM LOAD

Upper shelf: 40 kg / 88.2 lbs
Internal shelves: 20 kg / 44.1 lbs

CINEMA

Cinema is NorStone's first piece of AV furniture made of bamboo plywood. The bamboo species we use allow strong and sturdy constructions, just like our NorStone Cinema, a stable and robust piece of furniture ready to house all your AV equipment. The top platform welcomes larger flat screens. Acoustic cloth in its central section allows to hide a center speaker and any power cable (gathered in the rear), while the electronics (AV amplifier, players, consoles, etc.) are housed on the sides. You will not have to make a choice between quality and elegance.



DIMENSIONS

Overall dimensions (W x H x D):
1600 x 430 x 480 mm / 63" x 16.9" x 18.9"
Upper shelf (W x D):
1600 x 480 mm / 63" x 18.9"
Internal shelves (W x D):
2 compartments of
492 x 474 mm / 19.4" x 18.7"
central compartment
544 x 465 mm / 29.4" x 18.3"

DESIGN

Finish: Glossy black / Bamboo plywood
Structure: Glossy black powder coated steel
Shelves: Bamboo plywood
Miscellaneous: Cable hole on back



MAXIMUM LOAD

Upper shelf : 60 kg / 132.2 lbs
Internals shelves : 20 kg / 44 lbs

CARLY

The refined and simple exterior design of Carly features a beautiful black lacquer finish and an intermediate shelf which looks as if floating above the frame, giving the whole piece of AV furniture a look of its own. Its frame structure was designed to partly house your electronics on the intermediate shelf and into the lockable shelf unit (w/ door). Our exclusive system allows for a perfect cooling of your amplifier without any risk of overheating even when the door is shut.



DIMENSIONS

Overall dimensions (W x H x D):

1165 x 510 x 470 mm / 45.9" x 20"x18.5"

Upper shelf (W x D):

1165 x 470 mm / 45.9"x18.5"

Intermediate shelf (W x H x D):

1045 x 163 x 410 mm / 41.1" x 6.4" x 16.1"

Internal shelves (W x H x D) :

2 compartments of 496 x 181 x 438 mm / 19.5" x 7.1" x 17.2"

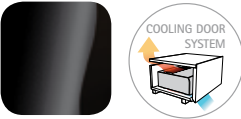
DESIGN

Finish: Glossy black / Black

Structure: Black powder coated steel

Shelves: Black lacquered tempered glass

Miscellaneous: Cooling door system, Cable hole on back



MAXIMUM LOAD

Upper shelf: 50 kg / 110.2 lbs

Intermediate shelf: 20 kg / 44 lbs

Internal shelf: 20 kg / 44 lbs

SÉ

Flat screens are getting bigger and thinner. Sé will hold your screen with style and its cable management ensures you a clean A/V setup. Built in lacquered steel and glass that makes it easy to clean and very solid, Sé has a contemporary design that will fit easily in your home.



DIMENSIONS

Overall dimensions (W x H x D):

1110 x 1155 x 438 mm / 43.3" x 45.4" x 17.2"

Shelves (W x D):

1050 x 400 mm / 41.3" x 15.7"

Height between shelves:

200 mm / 7.8"

DESIGN

Finishes: Glossy black / Black

Structure: Glossy black powder coated steel

Shelves: Black tempered glass

Screen mount: Adjustable height

Miscellaneous: Cable management system



MAXIMUM LOAD

Screen mount: 60 kg / 132.2 lbs

Upper shelf: 40kg / 88.2 lbs

Internal shelves: 20 kg / 44 lbs

COMPATIBILITY

Screen size (diagonal):

From 32" to 46" / 81 to 117 cm
VESA 75, VESA 100x75, VESA 100,
VESA 200x100, VESA 200, VESA 300,
VESA 400x200, VESA 400, VESA 600x400

ESSE

The best creations often find their origins in the most basic principles. This new furniture strengthens the NorStone Design concept: Efficient structure, noble and strong materials, made to house your electronics with elegance and sobriety. Esse allows you to choose between seven different finishes, making it easy to match any design trend.



DIMENSIONS

Overall dimensions (W x H x D):

1100 x 530 x 400 mm /
43.3" x 20.9" x 15.7"

Upper shelf (W x D):

1100 x 400 mm / 43.3" x 15.7"

Internal shelves (W x D):

1040 x 400 mm / 40.9" x 15.7"

Height between shelves:

189 mm / 7.4"

MAXIMUM LOAD (ESSE, ESSE MINI*)

Upper shelf: 80 kg / 176.4 lbs

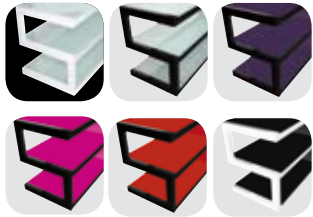
Internal shelves: 50 kg / 110.2 lbs

DESIGN (ESSE, ESSE MINI*)

Finishes: Glossy white / Frosted
Glossy black / Frosted* - Glossy black / Black* - Glossy black / Purple - Glossy black / Pink - Glossy black / Red - Glossy white / Black
Structure: Glossy black or white powder coated steel

Shelves: Frosted, black, purple, pink, red tempered glass

AVAILABLE COLOURS



IN THE SAME RANGE

ESSE MINI



DIMENSIONS

Overall dimensions (W x H x D):

800 x 500 x 350 mm /
31.5" x 19.7" x 13.8"

Height between shelves:

193 mm / 7.6"

ESSE HIFI

The plain and refined design of the Esse Hifi makes it a functional and elegant piece of furniture ready to house your AV equipment with style. The top shelf also welcomes any turntable or flat screens up to 32".



DIMENSIONS

Overall dimensions (W x H x D):

570 x 860 x 400 mm /
22.4" x 33.9" x 15.7"

Shelves (W x D):

570 x 400 mm / 22.4" x 15.7"

Height between shelves:

222 mm / 8.7"

MAXIMUM LOAD

Upper shelf: 40 kg / 88.2 lbs

Internal shelves: 20 kg / 44.1 lbs

DESIGN

Finishes: Glossy black / Black
Glossy black / Red
Structure: Glossy black powder coated steel
Shelves: Black or red tempered glass

Misc.: Self-gripping strap



IN THE SAME RANGE

ESSE STAND

DIMENSIONS

Overall dimensions (W x H x D):

230 x 610 x 250 mm /
9" x 24" x 9.8"

Upper shelf (W x D):

150 x 170 mm / 5.9" x 6.7"

Base (W x D):

230 x 250 mm / 9" x 9.8"



MAXIMUM LOAD

Upper shelf: 34 kg / 75 lbs

KUBBEN RANGE

Kubben combines rigorous lines and harmonious proportions for a zen and contemporary range of furniture. The dark wood contrasts with the white glass which looks as if it is floating above the frame.



DIMENSIONS

KUBBEN STAND

Overall dimensions (W x H x D):

250 x 685 x 270 mm /
9.8" x 27" x 10.6"

Upper shelf (W x D):

170 x 220 mm / 6.7" x 8.7"

Base (W x D):

250 x 270 mm / 9.8" x 10.6"

MAXIMUM LOAD

Upper shelf: 30 kg / 66 lbs

DIMENSIONS

KUBBEN

Overall dimensions (W x H x D):

645 x 762 x 500 mm /
25.4" x 30" x 19.7"

Height between shelves:

209 mm / 8.2"

Miscellaneous: Self-gripping strap

MAXIMUM LOAD

Upper shelf: 40 kg / 88.2 lbs

Internal shelves: 20 kg / 44.1 lbs

DIMENSIONS

KUBBEN AV

Overall dimensions (W x H x D):

1120 x 524 x 500 mm /
44.1" x 20.6" x 19.7"

Upper shelf (W x D):

1120 x 500 mm / 44.1" x 19.7"

Internal shelves (W x D):

920 x 438 mm / 36.2" x 17.2"

MAXIMUM LOAD

Upper shelf: 80 kg / 176.4 lbs

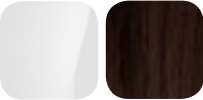
Internal shelves: 40 kg / 88.2 lbs

DESIGN

Finish: Dark rosewood / White

Structure: MDF feet and white powder coated steel framework

Shelves: White lacquered tempered glass



KUBBEN WB

Zen, rigorous lines and harmonious proportions for a contemporary range of furniture. The way the dark wood contrasts with white glass gives the impression that the shelf is floating above the frame. Kubben WB supports larger flat screens at the perfect viewing height. Its wide internal shelf will house your full AV system, while being cooled even if the door is shut.



DIMENSIONS

Overall dimensions (W x H x D):

1300 x 430 x 502 mm /
51.2" x 16.9" x 19.7"

Upper shelf (W x D):

1300 x 502 mm / 51.2" x 19.7"

Intermediate shelf (W x H x D):

1100 x 120 x 440 mm /
43.3" x 4.7" x 17.3"

Internal shelf (W x H x D):

2 compartments of 540 x 130 x 410mm /
21.2" x 5.1" x 16.1"

DESIGN

Finish: Dark rosewood / White

Structure: MDF feet and white powder coated steel framework

Shelves: White lacquered tempered glass

Misc.: Cooling door system, Cable hole on back



MAXIMUM LOAD

Upper shelf: 50 kg / 110.2 lbs

Intermediate and internal shelves:

25 kg / 55.1 lbs

PIÙ AV

Più AV sets the benchmark for elegance, purity and versatility. Like every great design, the simple and clean lines of Più AV will keep it up-to-date for years.



DIMENSIONS

Overall dimensions (W x H x D):
1090 x 554 x 512 mm /
42.9" x 21.8" x 20.2"

Height between shelves:
210 mm / 8.3"

DESIGN

Finishes: Piano black / Black or Piano white / Black
Structure: MDF (black or white piano lacquer) and steel

Shelves: Black lacquered tempered glass
Miscellaneous: Cable management system

MAXIMUM LOAD

Upper shelf: 80 kg - 176.4 lbs
Internal shelves: 15 kg / 33.1 lbs



IN THE SAME RANGE PIÙ FULL BLACK



DIMENSIONS

Overall dimensions (W x H x D):
640 x 761 x 512 mm /
25.2" x 30" x 20.2"

Height between shelves:
210 mm / 8.3"

MAXIMUM LOAD

Upper shelf: 30 kg / 66.1 lbs
Internal shelves: 15 kg / 33.1 lbs

NELIO

Uncluttered and modern, the Nelio will naturally match your flat screen. Its structure in powder coated steel can welcome a very comprehensive AV system with perfect stability. Its height has been optimized to ensure the best comfort with screens up to 50".



DIMENSIONS

Overall dimensions (W x H x D):
1100 x 480 x 480 mm /
43.3" x 18.9" x 18.9"

Height between shelves:
- 180 mm / 7.1"
- 178 mm / 7"

DESIGN

Finishes: Red / Black or Black / Black
Structure: Powder coated steel feet (red or black) and framework
Shelves: Black tempered glass
Miscellaneous: Cable management system



MAXIMUM LOAD

Upper shelf: 60 kg / 132.3 lbs
Internal shelves: 20 kg / 44.1 lbs

MASK AV

Even more oriented to ease your life, the Mask AV combines the practical advantages of a stand-alone AV piece (deep enough to welcome any kind of wide AV amplifier) and a flat screen wall mounting solution. The flat screen bracket has been tested to stand perfectly straight carrying up to 70 kg!



DIMENSIONS

Overall dimensions (W x H x D):

1180 x 1283 x 500 mm /
46.5" x 50.5" x 19.7"

Height between shelves: 296 mm / 11.7"

DESIGN

Finish: Glossy black / Clear

Structure: Glossy black

Shelves: Clear tempered glass

Screen mount: Rotating

Miscellaneous: Cable management system



MAXIMUM LOAD

Screen mount: 70 kg / 154.3 lbs

Shelves: 40 kg / 88.2 lbs

COMPATIBILITY

Screen size (diagonal):

From 32" to 50" / 81 to 127 cm
VESA 75, VESA 100, VESA 200x100, VESA 200,
VESA 300x200, VESA 300, VESA 400x200,
VESA 400x300, VESA 400, VESA 600x200,
VESA 600x300, VESA 600x400

BEOS

Thanks to an elegant glossy black finish and to its strength, Beos is now a must have of the NorStone range. Its universal brackets welcome a screen from 32" to 50" on a rotating head with adjustable height, to enjoy the show the best way. Two lacquered-glass shelves will store your AV equipment and a lacquered-steel column will hide your cables, giving this furniture a contemporary elegance. With its plain and refined design, this furniture turns out to be more than functional... it also follows the current design trends.



DIMENSIONS

Overall dimensions (W x H x D):

Min. 1142 x 1000 x 450 mm /
45" x 39.4" x 17.7"

Max. 1142 x 1200 x 450 mm /
45" x 47.2" x 17.7"

Height between shelves: 187 mm / 7.4"

DESIGN

Finish: Glossy black / Black

Structure: Black powder coated steel

Shelves: Black tempered glass

Screen mount: Rotating with adjustable height

Miscellaneous: Cable management system



MAXIMUM LOAD

Screen mount: 50 kg / 110.2 lbs

Shelves: 30 kg / 66.1 lbs

COMPATIBILITY

Screen size (diagonal):

From 32" to 50" / 81 to 127 cm
VESA 75, VESA 100x75, VESA 100,
VESA 200x100, VESA 200, VESA 300,
VESA 400x200, VESA 400, VESA 600x400

WOODEN

This AV furniture combines solid wood and lacquered glass. Its contemporary touch makes it easy to integrate in any kind of decor. The three shelves can smartly welcome a wide range of Home Theatre equipments. The invisible steel structure is designed to maximize the safety of the entire installation. The material quality as well as the balanced proportions offer aesthetic and reliable perspectives that will for sure exceed expectations.



DIMENSIONS

Overall dimensions (W x H x D):

1040 x 480 x 470 mm / 40.9" x 18.9" x 18.5"

Height between shelves:

- 152 mm / 6"

- 190 mm / 7.5"

DESIGN

Finish: Red pine / Black

Structure: Solid wood (red pine)

Shelves: Black tempered glass

Miscellaneous: Cable management system



MAXIMUM LOAD

Upper shelf: 80 kg / 176.4 lbs

Internal shelves: 30 kg / 66.1 lbs

EPUR

Epur feet are equipped with invisible wheels that make it easy to move. The removable cable management system ensures a clean installation without visible wires. The Epur Stand has been designed for high quality speakers to match Epur furniture style.



DIMENSIONS

Overall dimensions (W x H x D):

EPUR 3: 1100 x 581 x 400 mm / 43.3" x 22.9" x 15.7"

EPUR 4: 630 x 769 x 500 mm / 24.8" x 30.3" x 19.7"

EPUR Stand: 230 x 600 x 240 mm / 9.1" x 23.6" x 9.4"

Height between shelves:

EPUR 3: - 251 mm / 9.9"

- 242 mm / 9.5"

EPUR 4: - 222 mm / 8.7"

DESIGN

Finish: Satin / Clear

Structure: Silver satin brushed steel finish

Shelves: Clear tempered glass

Miscellaneous:

- Cable management system
- Ball-bearing feet



MAXIMUM LOAD

EPUR 3 & 4

Upper shelf: 80 kg / 176.4 lbs

Internal shelves: 30 kg / 66.1 lbs

EPUR Stand: 50 kg / 110.2 lbs



EPUR 3



EPUR STAND



EPUR 4

BERGEN 2

Offering the same new features as Bergen AV 2, Bergen 2 is a great ally against vibrations. This piece of furniture, with its 4 shelves, is ideal for top of the range Hi-Fi systems. Its top level has the perfect height for a turntable device. You'll appreciate the shelves' alignment with those of Bergen AV 2. A very nice combination.



DIMENSIONS

Overall dimensions (W x H x D):
559 x 709 x 500 mm / 22" x 27.9" x 19.7"
Height between shelves:
- 182 mm / 7.2"
- 182 mm / 7.2"
- 242 mm / 9.5"

DESIGN

Finish: Glossy black / Black
Structure: Glossy black powder coated steel
Shelves: Black lacquered tempered glass
Miscellaneous: – Self-gripping strap
– Spikes and counter spikes



MAXIMUM LOAD

Upper shelf: 20 kg / 44.1 lbs
Internal shelves: 40 kg / 88.2 lbs

BERGEN AV2

The Bergen line rapidly stood out of the NorStone range as the favorite furniture of audio addicts. Bergen AV2 now completes this very efficient concept. Rigidity has been increased by the way shelves are fastened between the different feet parts. Each level, including the lower one, has its own spikes and counter spikes system. Thus this piece of furniture becomes a great ally against vibrations.



DIMENSIONS

Overall dimensions (W x H x D):
1058 x 529 x 500 mm / 41.7" x 20.8" x 19.7"
Height between shelves:
- 182 mm / 7.2"
- 242 mm / 9.5"

DESIGN

Finish: Glossy black / Black
Structure: Glossy black powder coated steel
Shelves: Black lacquered tempered glass
Miscellaneous: – Self-gripping strap
– Spikes and counter spikes



MAXIMUM LOAD

Upper shelf: 80 kg / 176.3 lbs
Internal shelf: 40 kg / 88.1 lbs
Lower shelf: 40 kg / 88.1 lbs

STYLUM & FINN

The Stylum line of speaker stands has been designed by audio specialists for audio fanatics. The adjustable spikes ensure ideal adjustment for a perfect stability of the installation. You can also add sand inside the main tube to avoid the resonance frequency. Finn is the ideal solution to set your satellite speakers system.



STYLUM

Finishes: Glossy black or Silver

Structure: Glossy black or silver powder coated steel

Miscellaneous:

- Spikes or skidproof pads
- Adjustable spikes and counter spikes
- Cable management system

Max. load: 50 kg / 110.2 lbs

Dimensions:

Stylum 1 (H): 500 mm / 19.7"

Stylum 2 (H): 600 mm / 23.6"

Stylum 3 (H): 800 mm / 31.5"

Stylum 1, 2, 3 upper plate (WxD):

165 x 220 mm / 6.4" x 8.6"



STYLUM 1 STYLUM 2 STYLUM 3

FINN

Finishes: Black or silver

Structure: Black or silver powder coated steel

Base: Cast iron to ensure full stability

Miscellaneous:

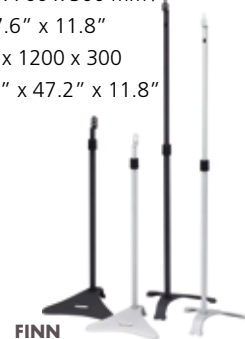
- Adjustable height
- Cable management system

Max. load: 9 kg / 19.8 lbs

Dimensions:

Min. 300 x 700 x 300 mm / 11.8" x 27.6" x 11.8"

Max. 300 x 1200 x 300 mm / 11.8" x 47.2" x 11.8"



FINN

WALK STAND

Perfectly standing out on its lacquered glass base, the Walk Stand combines dynamics and stability. Its original design will highlight the speakers you'll place on its summit. You'll be able to hide your cables inside one of the tubes whatever their diameter, and preserve your Walk Stand's elegant line. The plates are equipped with absorbing feet and soft adhesive pads that will allow you to place your speaker very safely. They will provide the necessary decoupling for a perfectly working speaker.



DIMENSIONS

Overall dimensions (W x H x D):

266 x 722 x 332 mm / 10.5" x 28.4" x 13.1"

Upper plate (WxD): 160 x 195 mm /

6.2" x 7.6"

DESIGN

Finish: Glossy black / Black

Structure: Glossy black powder coated steel

Upper plate: Glossy black powder coated steel

Lower plate: Black tempered glass

Miscellaneous: – Cable management system
– Rubber pads



MAXIMUM LOAD


Upper shelf: 30 kg - 66.1 lbs

WALL MOUNTS

Because a flat screen TV becomes a piece of art once wall mounted, NorStone offers a line of truly universal plasma and LCD brackets. All NorStone brackets combine a great resistance to loading, a unique ease of use, and a reinforced safety (featuring locking systems).



WALL MOUNTS

Name	Slim 2337	Slim 3763	Slim V200	Place 200	Wald 3763	Magic 3255
Photo	1	2	3	4	5	6
Screen size	23" - 37"	37" - 63"	Vesa only	Vesa only	37" - 63"	32" - 55"
VESA 	max 400 x 400	max 800 x 400	50-75-100-200	50-75-100-200	max 800 x 400	max 400 x 400
Integrated bubble level	yes	yes	no	no	yes	no
Max load	50 kg (110 lbs)	65 kg (143 lbs)	30 kg (66 lbs)	30 kg (66 lbs)	60 kg (132 lbs)	50 kg (110 lbs)
Color	Black	Black	Black	Black	Black	
Wall to Screen	14.5 mm	19 mm	18 mm	85-230 mm	80-560 mm	14.5 mm
Pan / Swivel				swivel: 180°	swivel: 90°	
Tilt				±20°	10° down	



PROJECTOR MOUNTS

Name	Proje-5	Proje-L	Proje-W
Photo	7	8	9
Max load	10 kg (22 lbs)	10 kg (22 lbs)	10 kg (22 lbs)
Projector to Ceiling / Wall	120 or 190 mm	120 - 340 - 430 - 650 - 735 - 955 or 1040 mm	min. 480 mm max. 660 mm
Swivel	360°	360°	360°
Tilt	±15°	±15°	±15°

ACCESSORIES

Name	Iryx	Safeline
Photo	10	11
Type	IR repeater	Safety kit
	1 to 8 equipments	

NORSTONE CABLE RANGE

SPEAKER CABLE



MINI-ROLL
CLASSIC



MINI-ROLL
CLASSIC WHITE

BANANA PLUG



GOLD-PLATED
BANANA PLUG



BLS 500

RCA & MINI JACK



IRK 280



IRCK 280



RCM 350

RCA RANGE



RCS 500

RCA SILVER RANGE



HDMI REPEATER



HDMI SWIVEL
ADAPTOR

HDMI ACCESSORIES

HDMI RANGE



HDR 150



HDR 180
(WITH ETHERNET)

HDMI SILVER RANGE



HDS 500



HDS 540
(WITH ETHERNET)

CLASSIC & CLASSIC WHITE

The quality of speaker cables plays a major role in delivering music signal from your source to your loudspeakers. The Classic line uses ultra pure (Oxygen Free Copper 99.999 %) copper in a transparent outer jacket. Polarity can easily be recognized thanks to the outer jacket geometry (round and square).

The Classic White line combines the same performance and specifications as the Classic line. The only difference is its white outer jacket, which allows an easy and discreet integration. In this respect, the Classic White line is more dedicated to a home use.



FEATURES

OFC 99.999 %

Classic: transparent outer jacket

Classic White: white outer jacket

CL 150 / W 150

Conductor type: 2 x 1.5 mm²

Overall size: 3 x 6 mm

CL 250 / W 250

Conductor type: 2 x 2.5 mm²

Overall size: 4 x 8 mm

CL 400

Conductor type: 2 x 4 mm²

Overall size: 4.5 x 10.5 mm

CL 600

Conductor type: 2 x 6 mm²

Overall size: 5.5 x 12 mm

PACKAGING

Types: 100 m (328 ft) Spool

15 m Mini-rolls (CL 150 & W 150)

10 m Mini-rolls (CL 250 & W 250)

CLASSIC WHITE

CLASSIC

FLAT WIDEBAND

The FB 250 flat profile allows unobtrusive runs along baseboards and under carpet. Its flexible design will easily route in corners and around doorframes... Apart from its real custom installation quality, the FB 250 is also audibly superior in many aspects. The conductors consist of a proven flat braiding technique that ends up in a 2 x 2.5 mm² gauge. Its exceptionally low resistance allows the amplifier to exert stunning grip and control on the speaker they drive, especially in the bass.



FLAT WIDEBAND

- Features**
- OFC 99.99 %
 - Transparent outer jacket

FB 250

- Conductor type:** 2 x 2.5 mm²
- Overall size:** 2.5 x 11.5 mm

PACKAGING

- Type:**
- 100 m (328 ft) Spool

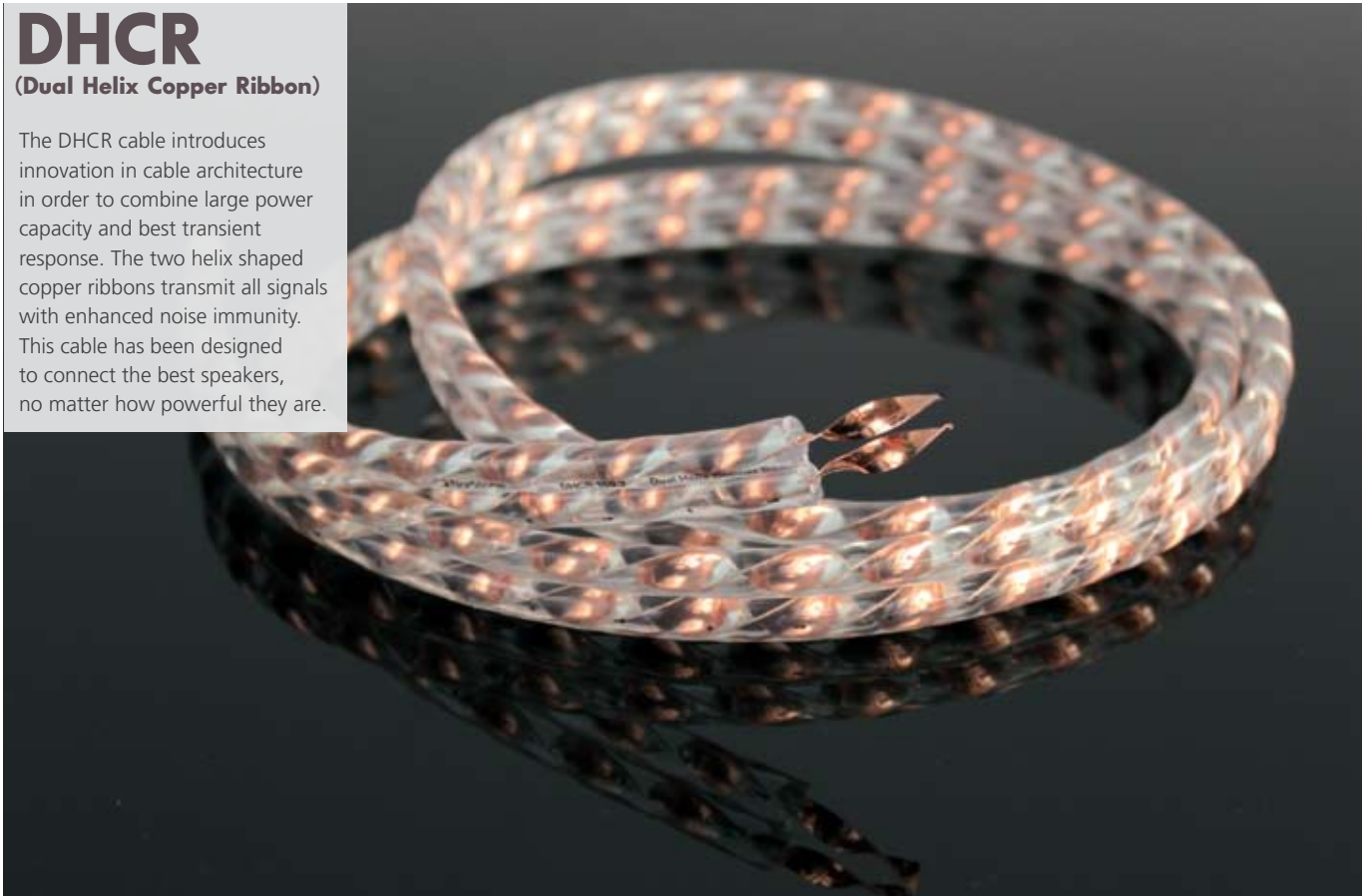
FLAT WIDEBAND



DHCR

(Dual Helix Copper Ribbon)

The DHCR cable introduces innovation in cable architecture in order to combine large power capacity and best transient response. The two helix shaped copper ribbons transmit all signals with enhanced noise immunity. This cable has been designed to connect the best speakers, no matter how powerful they are.



FEATURES

- Twisted flat speaker cable
- High performance OFC
- Ultra low resistance
- Reduces skin effect
- and offers better treble control
- Reduced cable capacitor effect

- Resistance:** 0.017 Ω /m
- Capacitance:** 50,31 pF/m
- Conductor type:** 2 x 1 mm²

PACKAGING

- Type:** 1 x 100 m (328 ft) Spool
- Dimensions (WxHxD):**
- 310 x 310 x 210 mm / 12.2" x 12.2" x 8.3"

DHCR 100.2



SILVER WIDEBAND

The ultra low resistance offered by the silver-plated ultra pure copper conductors of the Silver ensures a firm grip and transient precision. This cable allows unparalleled musical cohesion and a truly 3-dimensional soundstage with solid, believable images you can almost reach out and touch, even during the most complex musical passages.



SILVER

Features

Silver-plated OFC conductors
White pearl outer jacket

SV 150

Conductor type: 2 x 1.5 mm²
Overall size: 3 x 6 mm

SV 250

Conductor type: 2 x 2.5 mm²
Overall size: 4 x 8 mm

PACKAGING

Type: 100 m (328 ft) Spool



SILVER WIDEBAND

BANANA PLUG

(GOLD-PLATED & BLS 500)

NorStone gold-plated banana plugs have been, both mechanically and electrically, designed to ensure the best possible connection of your speakers.

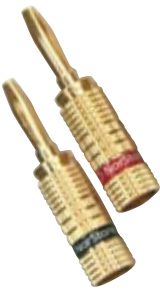
BLS 500 is the ultimate banana plug and has been especially designed and developed for Hi-End speaker connection. The perfect contact with silver-plated OFC is safely locked in position thanks to the Lock'In system. Using banana plug is now safe and as strong as a screw locking.



GOLD-PLATED BANANA PLUG

The screw-fixing system allows an in-line cable connection, for a clean and aesthetic finish. The gold finish of the connectors ensures high contact pressure both with the cable and the plug.

Packaging: Convenient and affordable, NorStone gold-plated banana plugs are packed by 4 units (2 red and 2 black) and delivered with a mounting guide.



BLS 500

High performance banana plug - Silver-plated contact - Lock'in system for safe and strong contact - Compatible with cable up to 6 mm².

Packaging: Delivered by 4 units in a tubular plastic. Packaging with hanger.



LOCK'IN



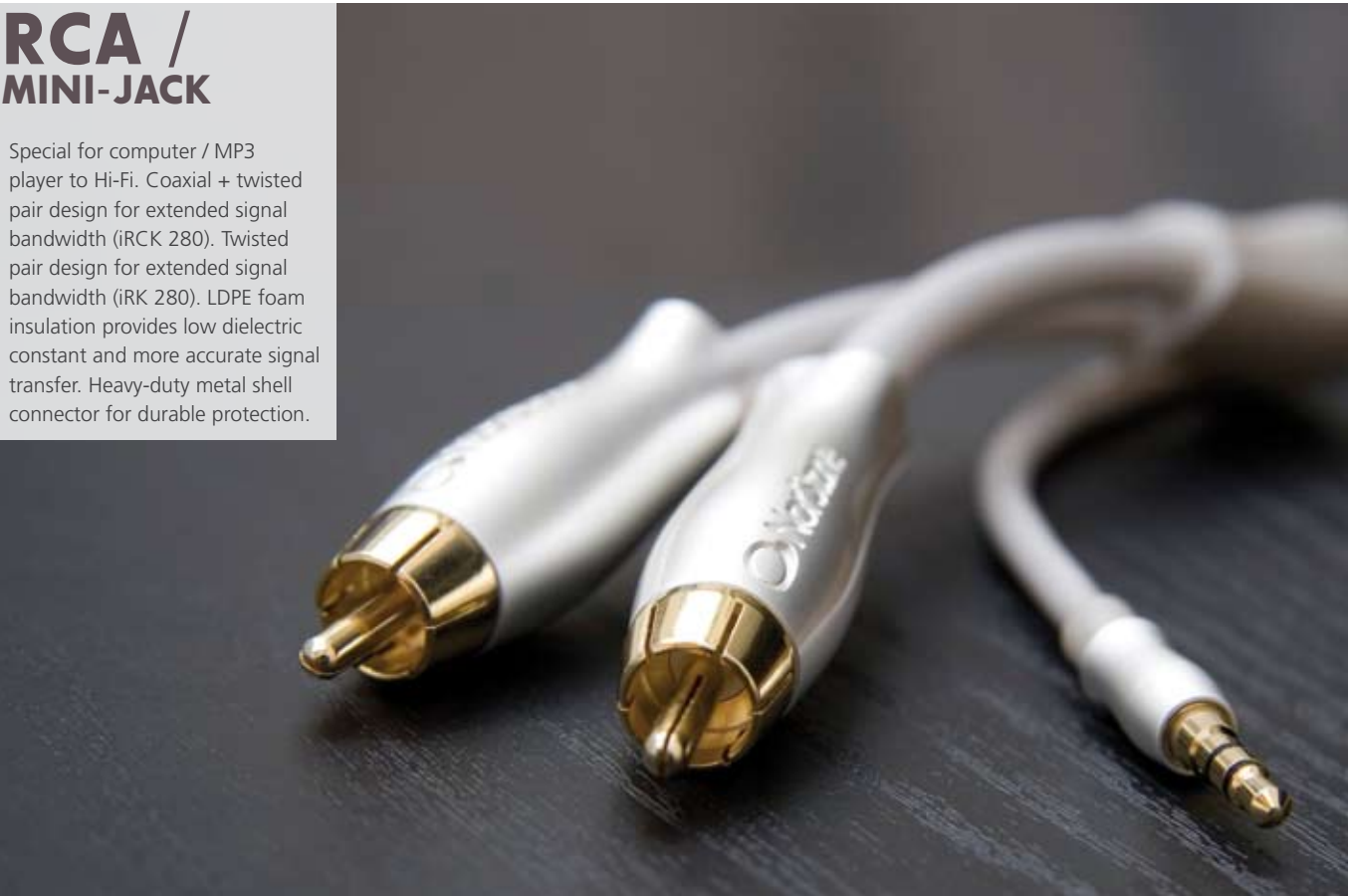
RCA

Special for analog line interconnect. Coaxial design for extended signal bandwidth. LDPE (Low Density Polyethylene) foam insulation provides low dielectric constant and more accurate signal transfer. Solid core OFC 99,999% conductor for deeper and stronger bass response. Heavy-duty metal shell connector for durable protection.



RCA / MINI-JACK

Special for computer / MP3 player to Hi-Fi. Coaxial + twisted pair design for extended signal bandwidth (iRCK 280). Twisted pair design for extended signal bandwidth (iRK 280). LDPE foam insulation provides low dielectric constant and more accurate signal transfer. Heavy-duty metal shell connector for durable protection.



RCM 350

Length: 1 m / 3.3 ft

CABLE

Structure: Coaxial

Conductor: Tin OFC

Shield: Optimized Tin OFC (99.999%) shield braid

Outer jacket: PVC with Nylon braid

PLUG

Metal body – Black chromium finish

Contact: 24K gold-plated contact – **Solder:** Tin

Packaging: Blister (RCM 350)

RCS 500

Lengths: 0.5 m / 1.6 ft - 1 m / 3.3 ft

CABLE

Structure: coaxial

Conductor: Silver plated OFC 99,999%

Shield: Optimized silver plated copper OFC (99.999%) shield braid

Outer jacket: Crystal clear PVC

PLUG

Metal body – Silver chromium finish

Contact: Silver plated contact – **Solder:** Silver

Packaging: Metal box (RCS 500)



IRCK 280

3.5 mm stereo Mini-jack to 2 x RCA

Length: 1.5 m / 4.9 ft

CABLE

Structure: Co-axial + twisted pair

Conductor: Tin OFC

Shield: Optimized Tin OFC (99.999%) shield braid + AL-Mylar

PLUG

Metal body – Pearl White finish

Contact: 24K gold-plated contact - **Solder:** Tin

Packaging: Plastic can

IRK 280

3.5 mm Mini-Jack to 3.5 mm Mini-Jack – Stereo

Length: 1.5 m / 4.9 ft

CABLE

Structure: twisted pair

Conductor: Tin OFC

Shield: AL-Mylar

PLUG

Metal body – Pearl White finish

Contact: 24K gold-plated contact

Solder: Tin

Packaging: Plastic can



HDMI

HDR 150 - HDR 180

High Definition video and multi-channel sound with one cable only. Compatible with all standards and high definition video formats up to 1080p. Supports X.V Color and Video Deep Color multi-bit. Supports all HD Audio formats : PCM, DVD-Audio, SACD, Dolby True HD, DTS-HD, Master Audio. Ready for future HD formats. The HDR 180 allows as well ethernet signal transmission. It's the best entry level option in HDMI cables with Ethernet.



HDR 150

Lengths: 1.5, 3, 5, 10, 15* m
High Speed HDMI (10.2 Gbps)

HD Video: 720p, 1080p, 3D 1080p*

Max resolution: 2560 x 1600p75*, Deep Color, xvYCC

Audio: 8 channel LPCM, 192kHz 24 bits, SACD, Dolby TrueHD bitstream capable, DTS-HD Master Audio bitstream capable.

OFC tin conductor
OFC tin braid + Aluminium-Mylar shield
Tin Solder
PE Foam Insulation
Exclusive ergonomic design molded plug
Rust-free gold plated contact
Packaging: Blister



HDR 180

Lengths: 1.5, 3, 5, 10, 15* m
High Speed HDMI 1.4 with Ethernet (10.2 Gbps)

HD Video: 720p, 1080p, 3D 1080p*

Max resolution: 2560 x 1600p75*, Deep Color, xvYCC
Audio: 8 channel LPCM, 192kHz 24 bits, SACD, Dolby TrueHD bitstream capable, DTS-HD Master Audio bitstream capable.
OFC tin conductor

OFC tin braid + Aluminium-Mylar shield
Tin Solder
PE Foam Insulation
Exclusive ergonomic design molded plug
Rust-free gold plated contact
Packaging: Blister



WITH ETHERNET

* except 15 meters length (max resolution for 15 meters cable is 1920 x 1200p60). 15 meters cable include an active repeater on cable.

HDMI

HDS 500 - HDS 540

The HDMI cables HDS 500 and 540 are the best in terms of performance of high definition video signal transmission, Full HD 1080p compatible, even in 3D, they offer outstanding performances. The silver plated conductors and the specific connectors guarantee top performance over the years. The HDS 540 also accepts Ethernet transmission (New HDMI 1.4)



HDS 500

Lengths: 1.5, 3, 10, 15* m
High Speed HDMI (10.2 Gbps)

HD Video: 720p, 1080p, 3D 1080p*

Max resolution: 2560 x 1600p75*, Deep Color, xvYCC

Audio: 8 channel LPCM, 192kHz 24 bits, SACD, Dolby TrueHD bitstream capable, DTS-HD Master Audio bitstream capable.

OFC silver plated conductor
OFC silver plated braid + Aluminium-Mylar shield
Silver solder
PE Foam Insulation
Exclusive ergonomic design metal plug
Rust-free silver plated / gold contact
Packaging: Metal Box



HDS 540

Lengths: 1.5, 3, 10 m
High Speed HDMI 1.4 with Ethernet (10.2 Gbps)

HD Video: 720p, 1080p, 3D 1080p*

Max resolution: 2560x1600p75 Deep Color, xvYCC
Audio: 8 channel LPCM, 192kHz 24 bits, SACD, Dolby TrueHD bitstream capable, DTS-HD Master Audio bitstream capable.
Ethernet channel
OFC silver plated conductor

OFC silver plated braid + Aluminium-Mylar shield
Silver solder
PE Foam Insulation
Exclusive ergonomic design metal plug
Rust-free silver plated / gold contact
Packaging: Metal Box



WITH ETHERNET

HDMI

ACCESSORIES

The NorStone HDMI accessories help you to install the easiest way your HDMI cables.

The HDMI repeater extends your HDMI cable until 20 meters. (max 2x10 metres cables, not compliant with NorStone 15 metres cables) with full HD resolution (1080p) (not for ethernet)

The HDMI swivel adaptor permits to connect your flat screen with ultra-thin wall mount, thanks to its twisting connector. It is 3D 1080p and Ethernet compliant.



HDMI SWIVEL ADAPTOR

Needed for TV hanged on wall

Connector: A type M/F HDMI plug, All pins connected

Dimensions: 67 x 21 x 10 mm, Depth @ 90°: < 36 mm

Packaging: Blister



HDMI REPEATER

Needed for HD transfer over 10 m

Max length: 10 + 10 m

Bandwidth: 1.65 GHz

Input video signal: 1.2 V pp

DDC signal: 5 V pp (TTL)

Connector: 19 pin HDMI Type A

Power consumption: 1 W typ / 15 W max

Power supply (not provided): 5 V DC *

Dimensions: 50 x 32 x 15 mm

Packaging: Blister



*External supply must be used if the HDMI source has no supply line.

NORSTONE CABLE DISPLAY



DISPLAY ROLL & BLISTER



DISPLAY ROLL ONLY



 **NorStone**
www.norstone-design.com